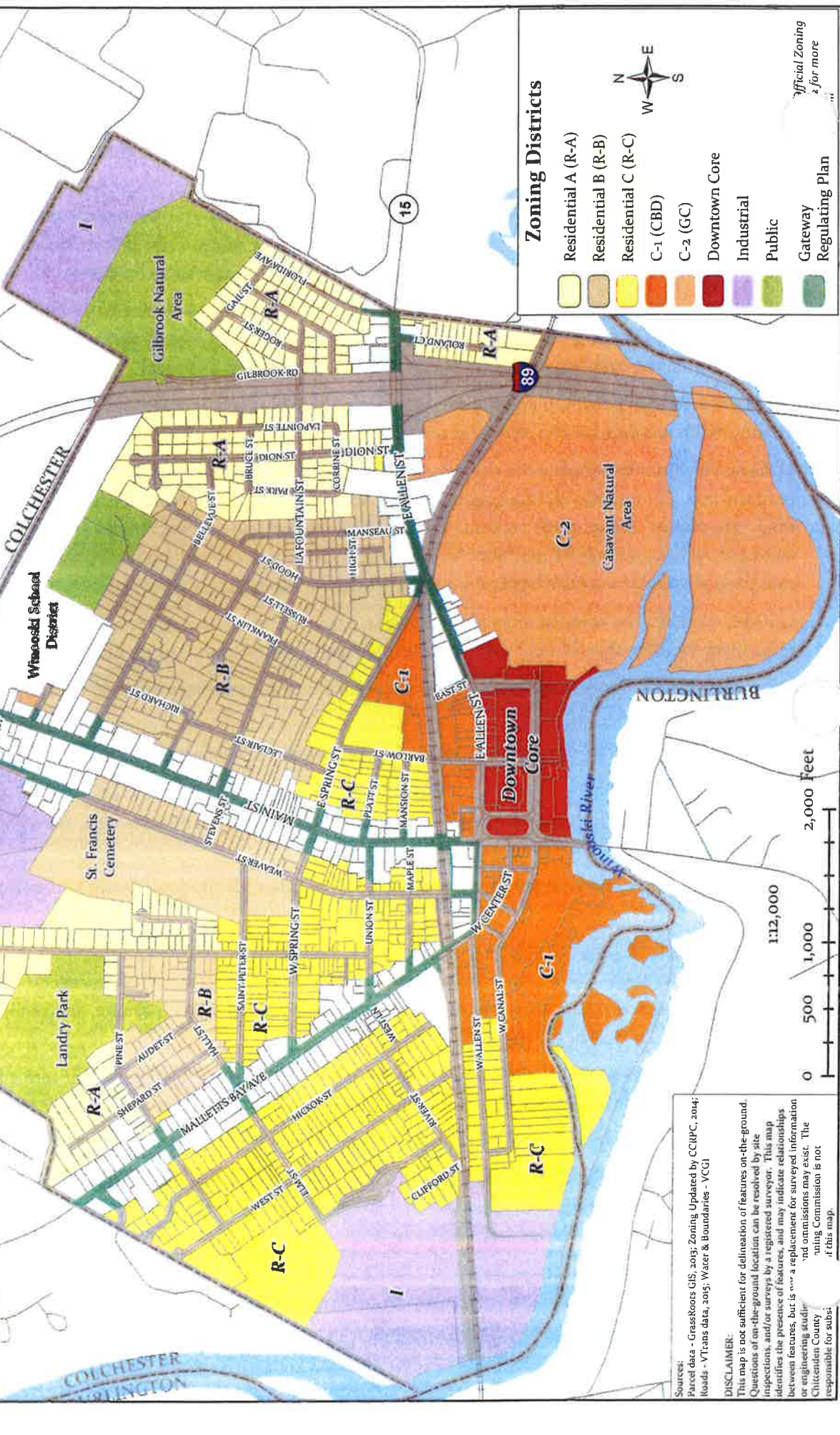


Official Zoning Map 1

City of Winooski, Vermont

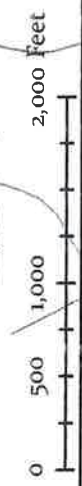
CHITTENDEN COUNTY RPC
 12/11/2015 10:58 AM
 D:\Projects\Winooski\WinooskiZoningMap2015a.8.mxd



Zoning Districts

- Residential A (R-A)
- Residential B (R-B)
- Residential C (R-C)
- C-1 (CBD)
- C-2 (GC)
- Downtown Core
- Industrial
- Public
- Gateway
- Regulating Plan

Official Zoning
 & for more



Sources:
 Parcel data - Grasshopper GIS, 2013; Zoning Updated by CCIRPC, 2014;
 Roads - VTtrans data, 2015; Water & Boundaries - VCGI

DISCLAIMER:
 This map is not sufficient for delineation of features on-the-ground.
 Questions of on-the-ground location can be resolved by site
 inspections, and/or surveys by a registered surveyor. This map
 identifies the presence of features, and may indicate relationships
 between features, but is not a replacement for surveyed information
 or engineering studies. No warranty, express or implied, is made
 by the City of Winooski. The City of Winooski is not
 responsible for any errors or omissions that may exist. The
 City of Winooski is not responsible for any errors or omissions that may exist.
 If this map.

Official Zoning Map 2

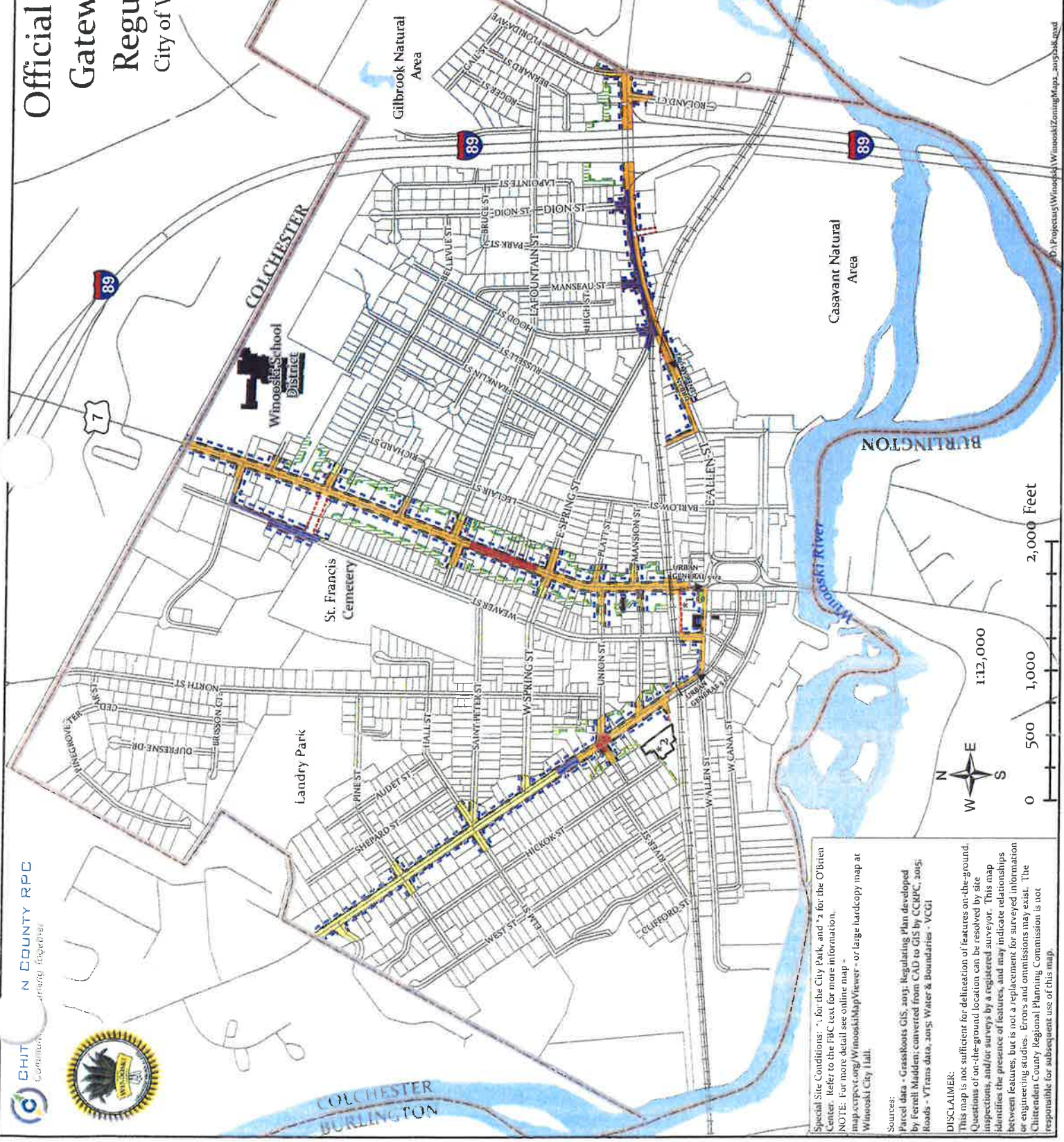
Gateway Districts

Regulating Plan

City of Winooski, Vermont

Gateway Regulating Plan

- Neighborhood Manners Setback
- Parking Setback
- Required Building Line (RBL)
- Lot Building Limit (LBL)
- BFS Urban General
- BFS Urban Storefront
- BFS Townhouse/Small Apt.
- BFS Detached Frontage
- Neighborhood Manners - 50 ft Setback
- Neighborhood Manners - 20 ft Setback
- Public Space
- Civic Structure

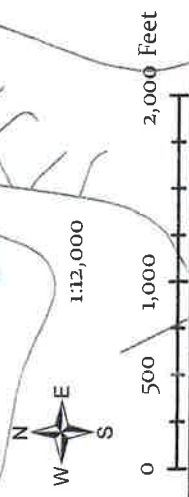


Special Site Conditions: *1 for the City Park, and *2 for the O'Brien Center. Refer to the FBC text for more information.

NOTE: For more detail see online map - map.corpex.org/WinooskiMapViewer/ - or large hardcopy map at Winooski City Hall.

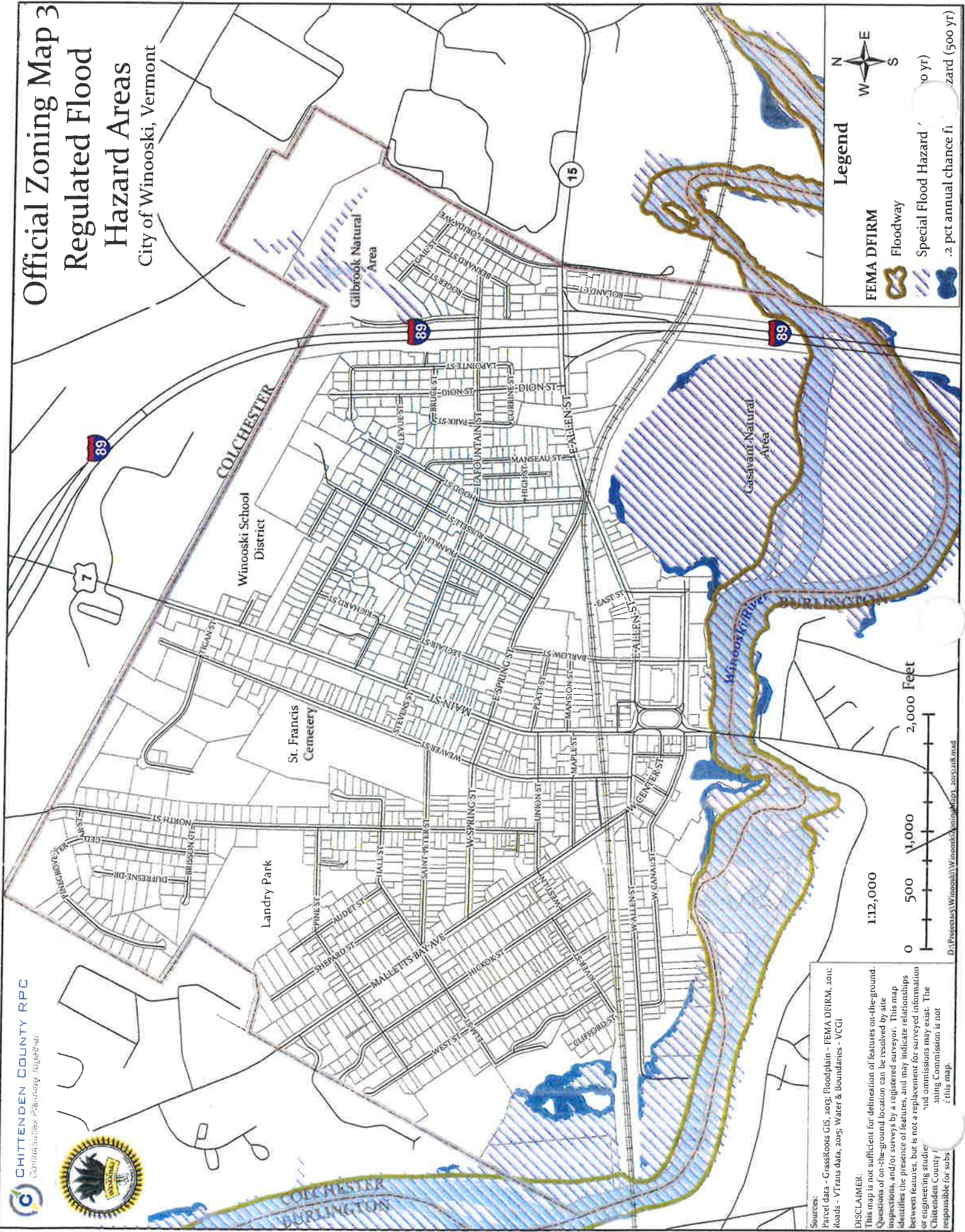
Sources:
 Parcel data - Grassroots GIS, 2013; Regulating Plan developed by Ferrell Madden, converted from CAD to GIS by CCRPC, 2015; Roads - VTrans data, 2015; Water & Boundaries - VCGI

DISCLAIMER:
 This map is not sufficient for delineation of features on-the-ground. Questions of on-the-ground location can be resolved by site inspections, and/or surveys by a registered surveyor. This map identifies the presence of features, and may indicate relationships between features, but is not a replacement for surveyed information or engineering studies. Errors and omissions may exist. The Chittenden County Regional Planning Commission is not responsible for subsequent use of this map.





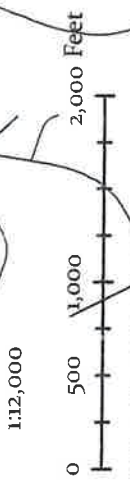
Official Zoning Map 3 Regulated Flood Hazard Areas City of Winooski, Vermont



Legend

- FEMA DFIRM
- Floodway
- Special Flood Hazard 1% annual chance flood
- Special Flood Hazard 0.2% annual chance flood

N
 W E
 S



Sources:
 Parcel data - Grassroots GIS, 2013; Floodplain - FEMA DFIRM, 2011;
 Roads - VTtrans data, 2015; Water & Boundaries - VCCI

DISCLAIMER:
 This map is not sufficient for delineation of features on-the-ground. Questions or on-the-ground location can be resolved by site inspections, and/or surveys by a registered surveyor. This map identifies the presence of features, and may indicate relationships between features, but is not a replacement for surveyed information or engineering studies. Flood hazard information is not being Commissioned by Chittenden County / RPC and the Commission is not responsible for its use.

D:\Projects\Winooski\Winooski\GIS\Map3\Map3_20151218.mxd